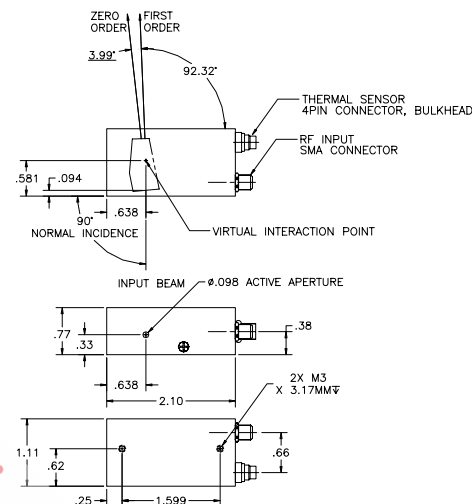


SPECIFICATIONS

AO Medium	TeO2
Acoustic Velocity	.68 mm/μs
Active Aperture*	2.5 mm Dia
RF Frequency Range	92-132 MHz
RF Bandpass (FWHM)	280 KHz @ 390 nm
Wavelength Range	351-430 nm
VSWR	2.4 :1 Max
Input Impedance	50 Ohms Nominal
Insertion Loss	3 % Max
Temperature Sensitivity	0.05 nm/C
Diffacted Beam Collinearity, min deviation	0.01 degrees
Input Optical Polarization	Vertical
Output Optical Polarization	Horizontal
Max RF Power	1 W

Outline Drawing:

Package 97-02837-01-15r1



For Reference Only

Please contact our Sales Dept.
for most recent specifications

Notes:

Simultaneous Diffraction, any 8 wavelengths
Random Wavelength Access Time: < 1.5 usec (1 mm Beam Diameter)
Max RF Power with 8 Simultaneous Frequencies = 1W

Special Testing

Diffraction Efficiency
(per wavelength input divergence < 2 mrad)

Min	Units	Max
90	%	

THIS DOCUMENT IS THE PROPERTY OF CRYSTAL TECHNOLOGY, INC. IT IS NOT TO BE REPRODUCED OR DISCLOSED IN WHOLE OR IN PART OTHER THAN BY EMPLOYEES CRYSTAL TECHNOLOGY AND ITS CONTRACTED REPRESENTATIVES AND DISTRIBUTORS. ANY EXCEPTION REQUIRES THE WRITTEN CONSENT OF AN AUTHORIZED REPRESENTATIVE OF CRYSTAL TECHNOLOGY.

TOLERANCES: XX ± .01 .XXX ± .005	DR	Geri Scholz 4/7/2008	Crystal Technology, Inc.		
MATERIAL:	CHK		DESCRIPTION: AOTF PCAOM		
FINISH:	APP		92-132 MHz Vert. Pol. UV		
	APP		PART NUMBER: 97-02837-01	REV: D	SHEET 1 OF 1

*Active Aperture: Aperture over which performance specifications apply.